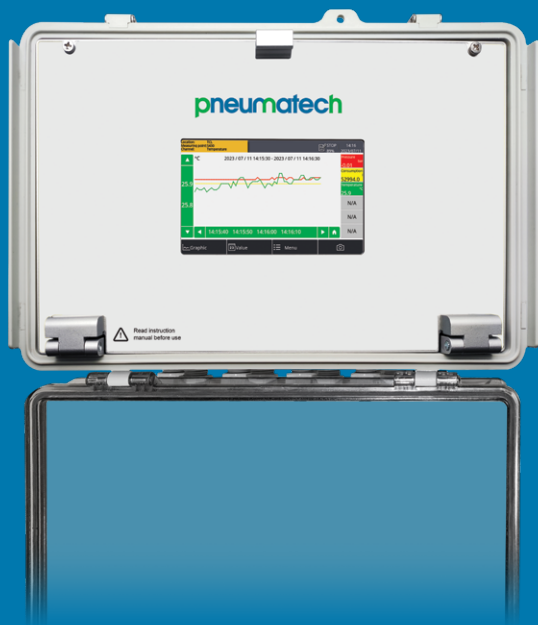


Measurement and monitoring solution

Check Box S18



Compressed air systems are critical to industrial operations, but they are also among the most expensive utilities to run. Energy losses, pressure fluctuations, and inefficient compressor cycles often go unnoticed, leading to unnecessary costs and reduced reliability.

Pneumatech data loggers provide the visibility you need. By continuously recording key parameters such as pressure, flow, temperature, and dew point, they give you raw data as well as actionable insights. This enables you to **maximize efficiency, reduce energy consumption, and ensure system reliability.**

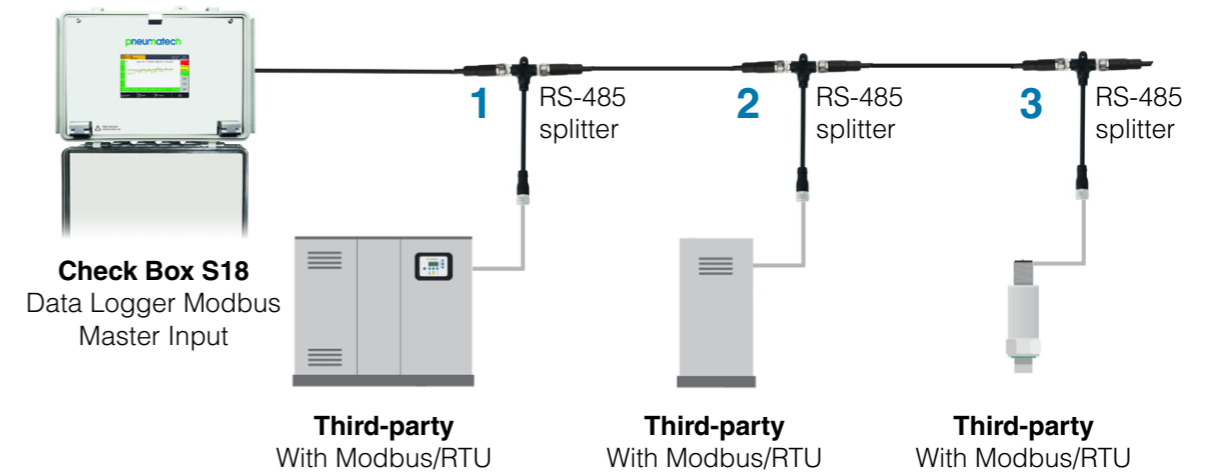
The Check Box S18 is a versatile stationary data logger for monitoring compressed air and gas systems. With a 5-inch touchscreen, support for up to 18 sensors, and remote data access, it delivers precise insights and detailed reporting for industrial applications.

Features & benefits

- 5" large color LCD touch screen display
- Up to 20 sensor inputs
 - » 2 x analog sensors
 - » 16 x Modbus/RTU Sensors
 - » 2 x SDI sensors
- 2 x relay outputs
- Data logger with ability to log 100 million values
- Suitable for IP65 industrial applications
- Modbus/RTU and Modbus/TCP sensor inputs
- Alarm monitoring for all measurement channels with on-screen indication and 2 relay outputs

Third party sensors

Using the industry standard protocol Modbus/RTU, any third-party sensor can be easily integrated into the monitoring system. Field devices can be easily set up using configuration software, allowing you to add third party sensors in seconds.

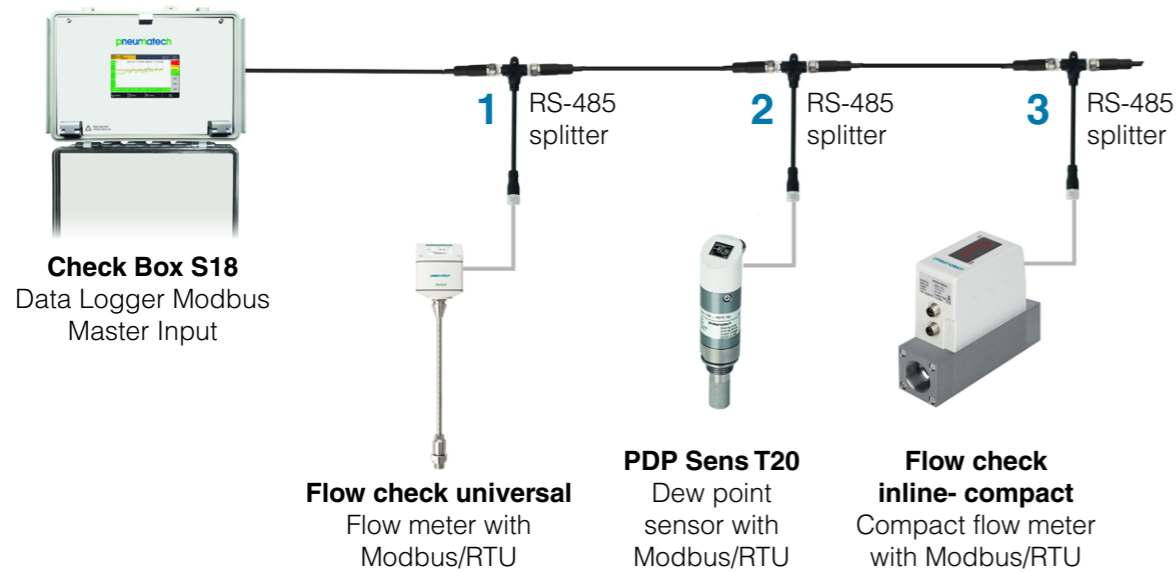


Connecting all compressed air devices

Pneumatech Modbus/RTU sensor input

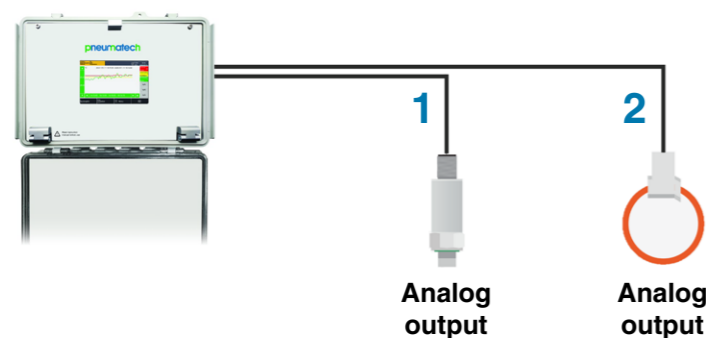
The Check Box S18 includes digital inputs for Pneumatech SDI sensors and Modbus/RTU sensors. To connect the Modbus/RTU sensors properly on an RS 485 bus system, it's recommended to daisy chain the sensors to one of the inputs. For this purpose, Pneumatech offers a RS 485 splitter to simplify the connection.

Through this method, up to 16 sensors can be added to the master input.



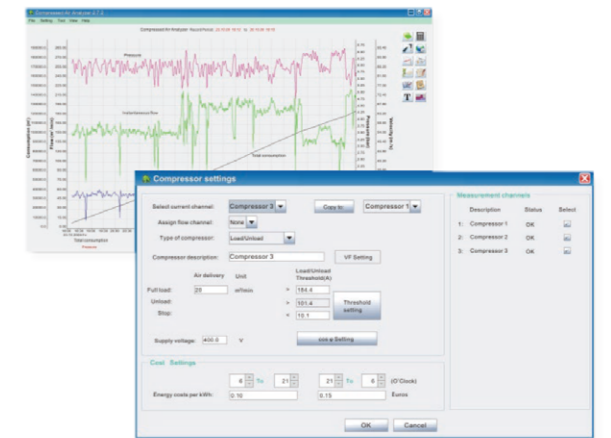
Analog sensor input

The Check Box S18, can be equipped with an analog input option, allowing you to connect 0/4... 20 mA, 0...10 V and pulse signals from field sensors.



Data analysis

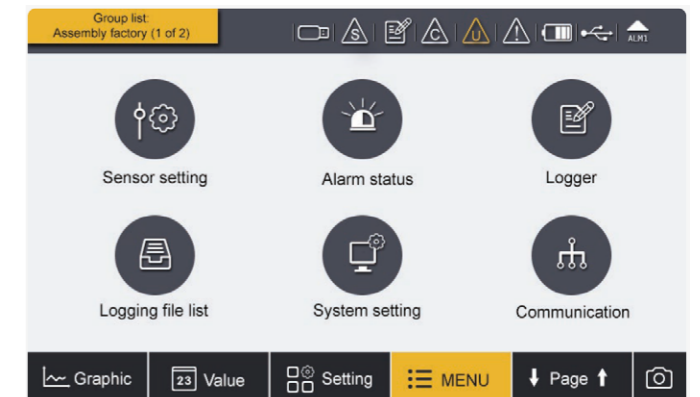
Using the Pneumatech S4A software, recordings can be downloaded to a PC via USB, LAN or wirelessly using the LTE/4G modem. Basic analysis can be done in S4A.



On-site configuration and data

Ease of use

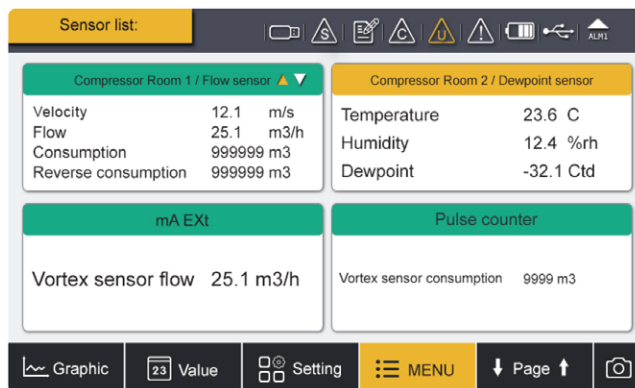
The Check Box S18 comes with a 5" touch screen interface, making operation as simple as possible.



Sensor data overview

You can view up to 4 sensors on one screen. Additional sensors can be displayed by scrolling through the page.

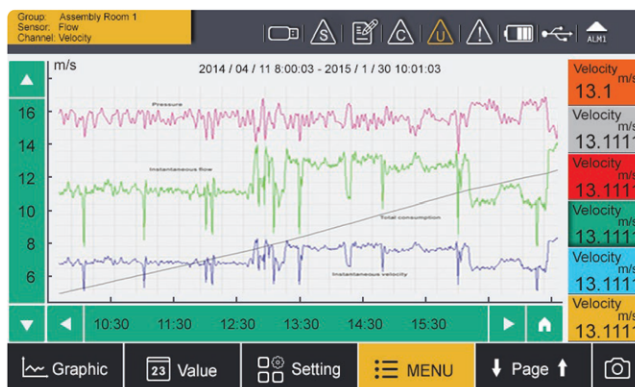
This makes it easier to monitor different sensors at the same time.



Graphic charts for analysis

With the built-in graphic analyzer, you can select different channels for analysis. This can help identify specific problems.

For detailed investigation we recommend using S4C software.



Technical data

Signal/interface and supply	
Data logger	
Storage	Internal, 100 million values
Sampling rate	Selectable >=1s
Input signals	
Digital input	2 x SDI sensors 16 x RS-485 Modbus RTU Sensors 2 x 0 ... 20 mA / 4 ... 20 mA / 0 ... 10V
Analog input	2 x 0/4 ... 20 mA; 2 x 0 ... 10 V; 2 x pulse
Pulse input	100 Hz maximum; 28 V, 10 mA
Output signals	
Analog / Pulse output	4 ... 20 mA signal and pulse signal of sensors can be looped through the display by using the connection board
Alarm output	2 relays, 230 VAC, 3 A, NC
Field bus Interface	
Protocol	Modbus/TCP (Ethernet), Modbus/RTU (RS 485)
Electrical data	
Power supply	85 ... 305 VAC, 60 W
Sensor supply	24V, 50W
Data interface	
Connection	Modbus/TCP (Ethernet), Modbus/RTU (RS 485), USB

General data	
Configuration	
PC software	S4C-display software
Display	
Integrated	Size: 5" high-resolution graphic display Resolution: 800 x 480 pixels touch screen
Material	
Housing	PC
Miscellaneous	
Electrical connection	Screw terminal
Protection class	IP65
Approvals	CE
Housing	Wall mounting
Cable entry diameter	4.5...8mm
Cable	Supply: AWG 12 ... AWG 24, 0.2 ... 2.5 mm ² ; Signals: AWG 16 ... AWG 28, 0.14 ... 1.5 mm ²
Weight	2.12 kg
Operating conditions	
Ambient temp	0 ... +50°C
Ambient humidity	< 90% rH
Storage temp	-20 ... +70°C
Transport temp	-20 ... +60°C

Ordering

Order number	Name
1830178066	Check Box S18