



Filter Solutions

Pneumatech offers you a comprehensive line-up of innovative filter solutions to meet your specific needs. Our filtration solutions are engineered cost-effectively to provide the best quality air and meet today's increasing quality demands.

For general applications we provide oil coalescing, particulate and oil vapor filters in a wide range of flows and pressures. Pneumatech is also your partner for breathing air, silicone-free, sterile & process filtration.

SLF - Silicone Free Filters

SLF - Silicone Free Filters

Features & Benefits

- ▶ Guaranteed silicone-free
 - Plasma-cleaned O-rings, diaphragms & gaskets
 - Metallic cylinders, housing components and fasteners washed at 80°C / 176°F
 - Certificates delivered with SLF filters
- ▶ Maximum contaminant removal
 - Removal of dry and wet dust, particulates, oil aerosol and water droplets
 - High-efficiency glass fiber and fleece media
- ▶ Significant energy savings & limited system operating costs
 - Optimal design and filter media allow for low pressure drops
 - High reliability
 - High-performance stainless steel cores, double O-rings, epoxy sealed caps and anti-corrosive coated filter housing

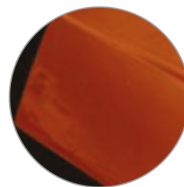
General Specifications

- ▶ Operating pressure range:
2-16 bar / 29-232 PSI
- ▶ Operating temperature range:
 - 0-66°C / 32-151°F (for grades S, D, G & C)
 - 0-35°C / 32-95°F (for grade V)
- ▶ Available grades:
 - G: general oil coalescing filtration (max oil carry-over: 0,1 mg/m³)
 - C: fine oil coalescing filtration (max oil carry-over: 0,01 mg/m³)
 - S: general dust filtration (99,81 % at MPPS)
 - D: fine dust filtration (99,97 % at MPPS)
 - V: oil vapor filtration (max oil carry-over: 0,003 mg/m³)
- ▶ Inlet and outlet connections: threaded



Zooming in

Avoid paint defects



Avoid blisters



Avoid poor adhesion



Avoid craters

The SLF filters are free from substances that could cause defects in the paint. The filters are manufactured in a controlled environment that ensures silicone is not present on the components used or introduced in the production process. All filters are subject to dimensional inspection, pressure &

performance testing and a paint compatibility test.

SLF filters are available in 5 grades, which efficiently prevent dry and wet dust, oil aerosol, oil vapor and water drops from entering your compressed air system.

Technical specifications for SLF Silicone-free filters												
Pneumatech Variant → Specifications ↓	Units	SLF 1	SLF 2	SLF 3	SLF 4	SLF 5	SLF 6	SLF 7	SLF 8	SLF 9	SLF 10	SLF 11
Nominal flow ⁽¹⁾	l/s	9	17	32	44	60	120	150	175	280	390	520
	m³/hr	32.4	61.2	115.2	158.4	216	432	540	630	1008	1404	1872
	cfm	19	36	68	93	127	254	318	371	594	827	1102
Connection	G/NPT	3/8"	1/2"	1/2"	3/4" & 1"	1"	1-1/2"	1-1/2"	1-1/2"	2" & 2-1/2"	3"	3"
Dimensions (A)	mm	90	90	90	110	110	140	140	140	179	210	210
	inch	3.54	3.54	3.54	4.33	4.33	5.51	5.51	5.51	7.05	8.27	8.27
Dimensions (B)	mm	61	61	61	98.5	98.5	105	105	105	121	128	128
	inch	2.40	2.40	2.40	3.88	3.88	4.13	4.13	4.13	4.76	5.04	5.04
Dimensions (C)	mm	268	268	323	374	414	520	603	603	689	791	961
	inch	10.55	10.55	12.72	14.72	16.30	20.47	23.74	23.74	27.13	31.14	37.83
Weight	Kg	1	1.1	1.3	1.9	2.1	4.2	4.5	4.6	6.9	11	12.6
	Lbs	2.2	2.4	2.9	4.2	4.6	9.3	9.9	10.1	15.2	24.3	27.8

1. Flow measured at reference conditions of Nominal pressure: 7 bar(e)/102 psig; temperature: 20°C, 68°F.

Correction Factors										
Inlet pressure	Bar(g)	2	4	6	7	8	10	12	14	16
Inlet pressure	psi(g)	29	58	87	102	116	145	174	203	232
Correction factor		0.53	0.75	0.92	1	1.06	1.2	1.31	1.41	1.5





Pneumatech reserves the right to change or revise specifications and product design in connection with any features of our products. Such changes do not entitle the buyer to corresponding changes, improvements, additions or replacements for equipment previously sold or shipped.

© 2017 Pneumatech. All rights reserved.

