

PDP Check M/ PDP Check M plus - Mobile dew point meters with data logger

Features & Benefits

- ▶ Precise dew point measurement down to $-80^{\circ}\text{C}_{\text{td}}$
- ▶ Quick response time
- ▶ 3.5" graphic display / easy operation via touch screen
- ▶ Integrated data logger for storage of the measured values
- ▶ USB interface for reading out via USB stick
- ▶ Calculates all necessary moisture parameters like g/m^3 , mg/m^3 , ppm V/V, g/kg , $^{\circ}\text{C}_{\text{tdatm}}$
- ▶ 2nd freely assignable sensor input for third-party sensors (only DP 510)
- ▶ International: Up to 8 languages selectable

Applications:

- ▶ Compressed air: Examination of refrigeration, membrane, adsorption dryers
- ▶ Technical gases: Residual moisture measurement in gases such as N_2 , O_2 etc.
- ▶ Plastic industry: Examination of granulate dryers



Special features



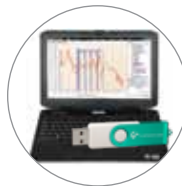
Quick installation



Ideal for service technicians

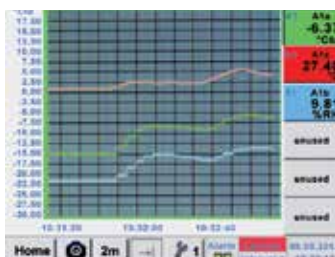


Dry container for sensor protection and quick adaptation time

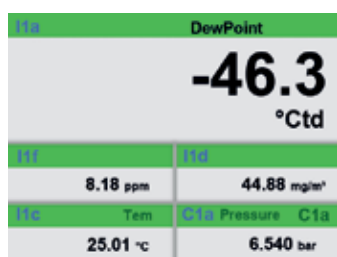


Transfer of data per USB stick to the PC

Everything a glance



Gradients are displayed graphically, so the operator sees at a glance the behavior of the dryer since the start of the measurement.



All physical parameters of the humidity measurement are calculated automatically. The PDP Check M plus also displays the measured values of the external sensor.



Up to 100 million readings can be stored. Each measurement may be accompanied by a comment, e. g. location name. The time interval can be determined freely.



Photo key saves current screen as an image file. No additional software necessary.

Description	Order no.
PDP Check M in a case - consisting of:	2255330386
• Portable dew point meter PDP Check M for compressed air and gases	2255332534
• Mobile measuring chamber up to 16 bar	2255332535
• Diffusion-tight PTFE hose with quick connector, length 1 m	2255332536
• Power supply for PDP Check M/ PDP Check M plus	2255332537
• Control and calibration set 11.3 % RH	2255332538
• Quick-lock coupling	2255332539
• Dry container for PMH dew point sensors	2255332540
• Transportation case (small) for PDP Check M	2255332541
PDP Check M plus in a case - consisting of:	2255332453
• Mobile dew point meter PDP Check M plus with one additional input external sensors	2255331735
• Mobile measuring chamber up to 16 bar	2255332535
• Diffusion-tight PTFE hose with quick connector, length 1 m	2255332536
• Power supply for PDP Check M/ PDP Check M plus	2255332537
• Control and calibration set 11.3 % RH	2255332538
• Quick-lock coupling	2255332539
• Dry container for PMH dew point sensors	2255332540
• Transportation case (large) for PDP Check M plus as well as other sensors	2255332523
Further options, not included in the set:	
Option: „Mathematics calculation function“ for 4 freely selectable channels, (virtual channels): addition, subtraction, division, multiplication	2255332521
Option: „Totalizer function for analogue signals“	2255332522
PMH Basic – data evaluation graphically and in tabular form - reading of the measured data via USB or Ethernet, license for 2 workstations	2255332468
Precision calibration at -40°Ctd or 3°Ctd with ISO certificate	2255332542
Additional calibration point freely selectable in the range between -80-+20°Ctd	2255332543
High pressure measuring chamber up to 350 bar	2255332544
Measuring chamber for atmospheric dew point	2255332545
Measuring chamber for granulate driers with minimum overpressure	2255332546
Portable dew point meter PDP Check M plus for compressed air and gases (high pressure version up to 350 bar)	2255332547
Portable dew point meter PDP Check M for compressed air and gases (high pressure version up to 350 bar)	2255332548

Technical data PDP Check M/ PDP Check M Plus	
Display	3.5" Touch screen
Measuring range:	-80-+50°Ctd -20-+70°C 0-100 %rF
Accuracy	± 0,5°Ctd bei -10-+50°Ctd Typ. ± 2°Ctd (remain. range)
Moisture parameters	g/m³, mg/m³, ppm V/V, g/kg, °Ctdatm, %rF
Pressure range	-1-50 bar standard -1-350 bar special version
Interface	USB interface
Data logger	8 GB SD memory card (100 millions values)
Power supply for sensors	Output voltage: 24 VDC ± 10% Output current: 120 mA continuous operation
Power supply	Internal rechargeable Li-Ion batteries, approx 12 h continuous operation, 4 h charging time
Screw-in thread	G 1/2" stainless steel
Ambient temperature	0-+50°C
EMV	DIN EN 61326-1