

PDP Check S3/S4 - Dew point monitoring

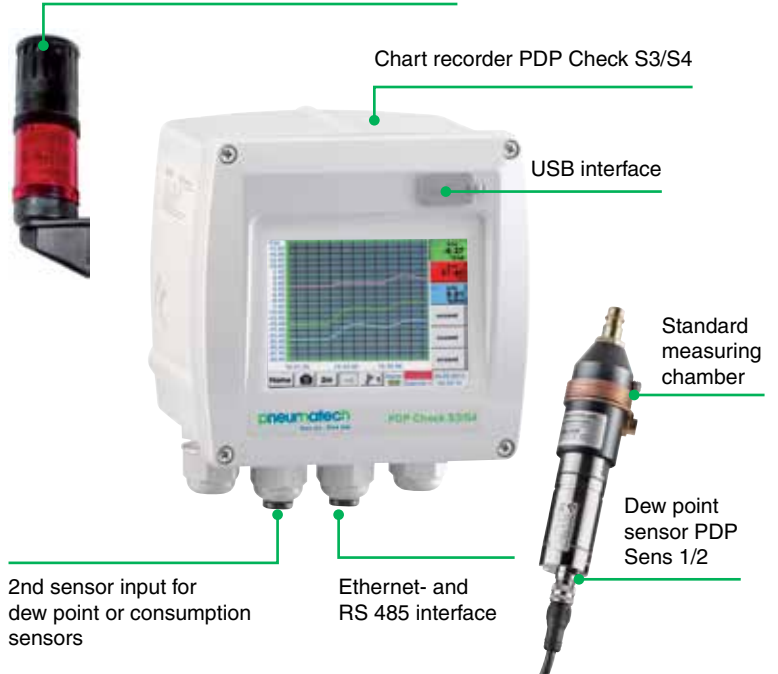
For stationary dew point monitoring of refrigeration or desiccant dryers. The touch screen graphic display enables an intuitive operation and shows the progress of the measured values. 2 alarm relays are available for monitoring of threshold values. Available either with a classic analogue output 4-20 mA or optionally with digital interfaces like Ethernet and RS 485 (Modbus protocol). As a stand-alone solution the measured data stored in the optional data logger can be read-out via USB stick and evaluated by means of the software PMH Soft Basic.

Features & Benefits

- ▶ 3.5" Graphic display – easy to use with touchscreen
- ▶ Plug-in system: everything wired and ready
- ▶ 2 alarm contacts (230 VAC, 3 A) Pre-alarm and main alarm freely adjustable
- ▶ An alarm delay can be set for each alarm relay
- ▶ 4-20 mA Analog output
- ▶ Option: Ethernet and RS 485 interface (Modbus protocol)
- ▶ Option: Webserver
- ▶ Option: Integrated data logger
- ▶ Record dew point curve up to 100 million readings
- ▶ PMH Basic for graphical and tabular evaluation. Read out data either via USB stick or Ethernet
- ▶ Option: Alarm unit (buzzer and continuous red light)

Options

Alarm unit (Buzzer and continuous red light)

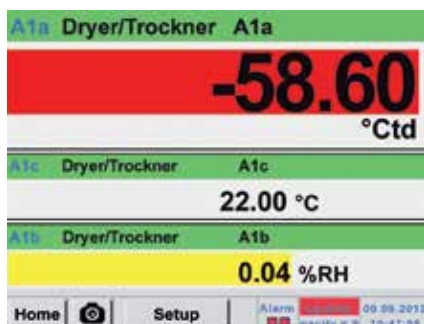


Feature

Transfer the data via USB stick to the PC

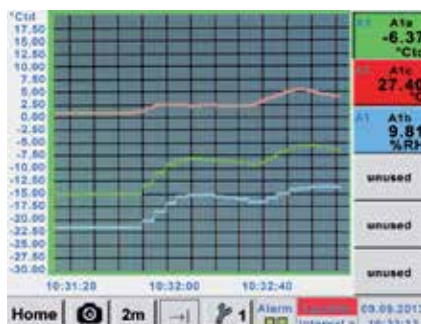


Easy operation via Touch screen



Actual measured values

All measured values can be seen at a glance. Threshold exceeding are indicated in red color. A „measuring site name“ can be allocated to each sensor.



Graphic view

In the graphic view all measured values are indicated as curves. It is possible to brows back on the time axis by a slide of the finger (without data logger maximum 24 h, with data logger back to the start of the measurement).



Data logger

Check Box S „speaks“ several languages. The required language can be selected by means of the select button.

Alarm settings for channel A1 (A1a)				
Upper limit				
	Value °Ctd	Hysteresis +/-	Relay 1	Relay 2
Alarm 1	-35.000	2.000	<input checked="" type="checkbox"/>	<input type="checkbox"/>
Alarm 2	-30.000	2.000	<input type="checkbox"/>	<input checked="" type="checkbox"/>
Lower limit				
Alarm 1	12.000	2.000	<input checked="" type="checkbox"/>	<input type="checkbox"/>
Alarm 2	8.000	2.000	<input type="checkbox"/>	<input checked="" type="checkbox"/>

Selection of the language

Each one of the 2 alarm relays can be allocated individually to a connected sensor. The alarm thresholds and the hysteresis can be freely adjusted. New: It is possible to set an alarm delay for each alarm relay so that the relay is just triggered after that period of time.

Time interval (sec)	
1	2
5	10
15	30
60	120
15	

force new record file

Comment:

Logger stopped

timed Start timed Stop

START STOP | 12:26:00 - 06.0 | 13:28:00 - 06.0

Remaining logger capacity = 9999 days
Logging: 0 channels selected
time interval (min 1 sec)

Adjustment of the alarm relays

Measured values are stored in Check Box S by means of the option „integrated data logger“. The time interval can be freely set. Furthermore there is the possibility to fix the starting time and the end time of the data recording. Read-out of the measured data via USB interface or via the optional Ethernet interface.

Technical data PDP Check S3/ S4

Dimensions	118 x 115 x 98 mm IP 54 (wall housing) 92 x 92 x 75 mm (panel mounting)
Inputs	2 digital inputs for PDP Sens 1/2 resp. Flow Check
Interface	USB interface
Power supply	100-240 VAC, 50-60 Hz
Accuracy	please see PDP Sens 1/2
Alarm outputs	2 relays, (pot. - free)
Options	
Data logger	100 million measuring values start/stop time, measuring rate freely adjustable
2 additional sensor inputs	for connection of pressure sensors, temperature sensors, clamp-on ammeters, third-party sensors with 4-20 mA 0 to 10 V, Pt 100, Pt 1000

Technical data PDP Sens 1/2

Measuring range:	-80-20 °Ctd resp. -20-50 °Ctd
Accuracy:	± 1 °C at 50--20 °Ctd ± 2 °C at -20--50 °Ctd ± 3 °C at -50--80 °Ctd
Pressure range:	-1-50 bar, special version up to 350 bar

Description	Order no.
Dew point monitoring PDP Check S3 for desiccant driers (-80+20° Ctd.)	2255332598
Dew point monitoring PDP Check S4 for refrigeration driers (-20+50°Ctd)	2255332599
Options	
Option: Integrated data logger for 100 million measured values	2255460217
Option: Integrated Ethernet and RS 485 interface	2255460216
Option: Integrated webserver	2255460218
Option: 2 additional sensor inputs for analogue sensors (pressure sensor, temperature sensor and so on)	2255332600
Additional accessories	
PMH Basic – data evaluation graphically and in tabular form - reading of the measured data via USB or Ethernet, license for 2 workstations	2255332468
Alarm unit mounted at wall housing	2255460211
Alarm unit for external mounting with 5 m cable	2255460231
Calibration and adjustment	
Precision calibration at -40 °Ctd or +3 °Ctd including ISO certificate	2255332542