



# Software

PMH Basic Data evaluation in graphic and table form - reading out of the measured data via USB stick or Ethernet. Due to the intuitive operation all important functions can be retrieved via the dashboard. For better visualization the measurement curves are indicated in terms of color. The user can quickly see which minimum respectively maximum measured values occurred at which time and how long.



## Functions:

### Graphic evaluation

All measuring curves are indicated in color. All necessary functions are integrated, like e. g. free zoom, selection/deselection of single measuring curves, free selection of periods, scaling of the axis, select colors and so on. This view can be stored as a PDF file and sent by e-mail. Different data can be combined in one common file.

### Table view

All measuring points are listed with exact time interval. The desired measuring channels with the name of the measuring place can be selected via the diagram explorer.

### Statistics

All required statistic data are visible at a glance. So the user can see very quickly which minimal or maximal measured values occurred when and for how long.

### Consumption report

The software issues a consumption report for all connected flow sensors, it can be selected if it should be daily, weekly or monthly.

### Data export to MS-Excel ® or csv

The measured data can be exported to Excel or csv.

### Tariffes

The price per consumption unit can be stored for each energy form. Depending on the time and the day different tariffs can be stored. The validity of the tariffs can be defined via calendar function in order to grant that price increased resp. decreases can be updated.

### Multi lingual

German, english and further languages are included in the scope of delivery.

### Alarm history / Alarm logfile

The exceeding of the limit values is documented with the PMH Network.

### Administration of the measuring sites

Each PMH sensor resp. each PMH chart recorder can be allocated to a department/hall (resp. cost centers).

## Optional add-on modules:

### Module „formular-editor“

By means of the formula editor e. g. the measured values of 2 sensors can be totaled or subtracted from each other.

PMH Basic	
Installation	Local PC installation
Data storage	Database (local)
Updates to new releases free of charge	Yes
Automatic information about upgrades	Yes (only in case of internet access)
Number of working place licenses	2
Number of measured values	All measured values transmitted by a device. (Max. 1 device at the same time)
Data transfer	USB Stick (manually) or Ethernet
User administration	No
E-Mail in case of threshold value exceeding	No
Storage of the measured data	Logger data have to be read-out manually via PMH Basic

# PMH Basic

## Intuitive operation

All important functions can be retrieved via the dashboard.

- ▶ Global Settings: Adjust units and change decimal places, store company name and logo
- ▶ Import real-time data: Establish Ethernet connection to PMH logger or sensor. Trace real-time measured data in graphic and in table form
- ▶ Import from PMH Soft Basic: Data migration from the previous version of PMH Soft Basic
- ▶ Data backup: Backup of the projects and the database



Intuitive operation

## Graphic evaluation

- ▶ All measurement curves are indicated in terms of color. All necessary functions like free zoom, selection/ deselection of single measured curves, free selection of periods, scaling of the axes, selection of colors and so on are integrated: This view can be stored as pdf file and sent by e-mail. Different data can be merged to one common file.



Graphic evaluation

## Table view

- ▶ All measuring points are listed with the exact time interval. The desired measuring channels with the measuring site name can be selected via the diagram explorer.

Date	Device	A2.1	B3.1	B3.2	B3.3
		Pressure bar	Dewpoint °Ctd	Rel.Humid. %	Temperatur °C
27.01.17 13:52:18	0	9,6749	-50,6462	0,1534	20,2556
27.01.17 13:52:28	0	9,676	-51,4187	0,1394	20,2517
27.01.17 13:52:38	0	9,6769	-52,0952	0,128	20,2499
27.01.17 13:52:48	0	9,678	-52,791	0,1173	20,2479

Table view

## Statistics

- ▶ All necessary statistiPMH data are apparent at a glance. So the user can quickly see which minimum or maximum measured values occurred at which time and for how long.

Channel	Average	Minimum	Date of minimum	Maximum	Date of maximum
A2.1 Pressure - A2a (bar)	9,6518 bar	9,61 bar	13.02.17 13:29:48	9,6391 bar	13.02.17 13:29:08
B3.2 Dewpoint - RelHumid (%)	0,1094 %	0,0695 %	13.02.17 14:00:28	0,4118 %	13.02.17 14:00:08
B3.1 Dewpoint - DewPoint (°Ctd)	-50,2794 °Ctd	-57,9502 °Ctd	27.01.17 13:54:36	-47,6251 °Ctd	13.02.17 14:36:08

Statistics

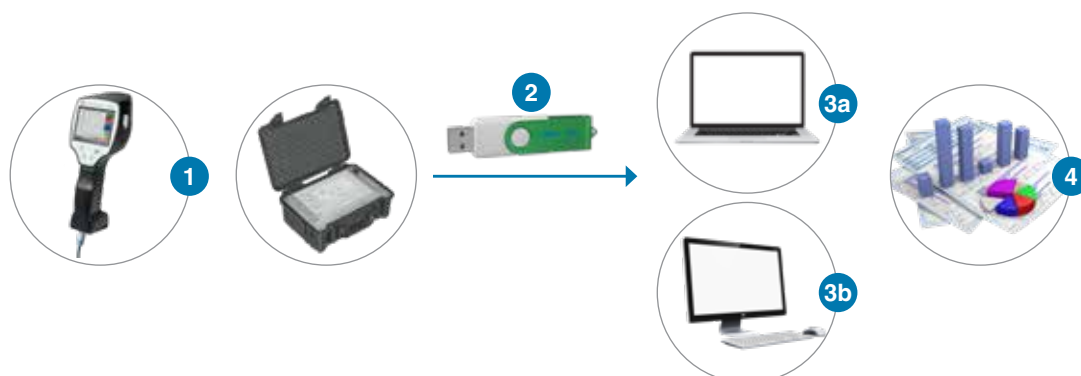
## Flow evaluation

- ▶ The software carries out flow analysis for all connected flow sensors optionally as daily, weekly or monthly report.

	January	February	March	April	May	June	July	August	September	October	November	December	Sum
A1.2 Start (m³)	1.959.827	2.076.325	2.215.062	2.368.494	2.514.612	2.698.480	2.826.483	3.022.938	3.190.484	3.318.642	3.491.961	3.659.617	3.659.617
End (m³)	2.076.325	2.215.062	2.368.494	2.514.612	2.698.480	2.826.483	3.022.938	3.190.484	3.318.642	3.491.961	3.659.617	3.775.973	
Consumption (m³)	117.498	138.737	153.432	148.148	183.868	180.003	176.455	168.548	148.158	173.019	167.656	116.356	1.817.148
Cost (€)	2.232,46	2.636,00	2.914,64	2.778,61	2.885,49	3.040,06	3.352,65	3.164,37	2.834,90	3.287,36	3.181,16	2.210,76	34.825,774
A1.1 Minimum (m³/h)	0	6,3	0	0	0	1,36	0	0	0	0	0	0	
Average (m³/h)	157,6	205,96	205,6	202,54	203,52	221,66	236,5	203,25	206,67	232,19	232,67	155,99	
Maximum (m³/h)	1.000,36	527,02	736,36	1.154	892,43	618,27	617,9	695,36	901,66	642,96	668,77	2.410,71	

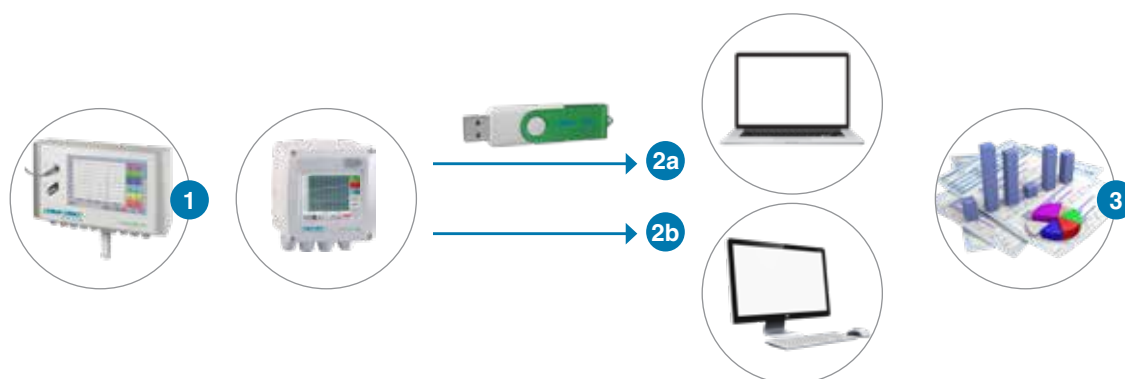
Flow evaluation

## Data evaluation for mobile measurement:



- 1 Mobile measurement at the customer. Measured data are saved in the data logger in the selected measuring cycle
- 2 Export of the data to the USB stick
- 3a Import of the measured data to the laptop directly on-site
- 3b Import of the measured data to the computer in the office
- 4 Evaluation and print out of the measured data

## Data evaluation for fix installed chart recorder in the company:



- 1 Chart recorder is fix installed in the company. Measured data will be saved in the data logger in the selected measurement cycle
- 2a Transfer the data via USB stick to the computer
- 2b Readout of the logger data via the computer network (LAN) by means of PMH Basic
- 3 Evaluation and print out of the measured data

Description	Order no.
PMH Basic - data evaluation in graphic and table form - readout of the measured data via USB or Ethernet. License for 2 working places	2255332468
Additional license for 1 further working place	2255332735
Module „Formula Editor“ – by means of the formula editor the measured data and constants can be calculated (addition, subtraction, division, multiplication, root function, exponentiation)	2255332736